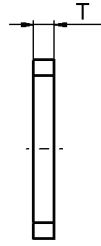
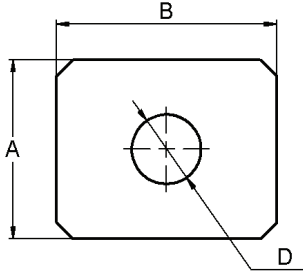
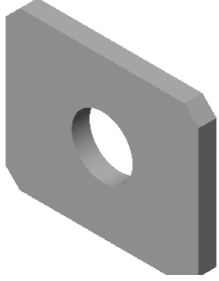


"Düz" & "Tırtıllı" Pul

"Plain" & "Serrated" Washers
"Ровные" И "Зубчатые" Шайбы

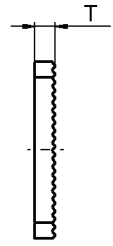
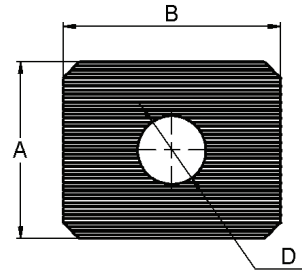
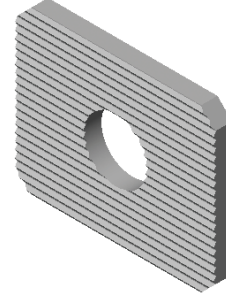
"Düz" Pul
"Plain" Washers
"Ровные" Шайбы

CVTAJ-09



"Tırtıllı" Pul
"Serrated" Washers
"Зубчатые" Шайбы

CVTAJ-10



- ◆ Düz ve Tırtıllı Pullar, Ankrajlar ile birlikte kullanılan aksesuarlardır.
- ◆ "Plain" & "Serrated" Washers are accessories used with Anchors.
- ◆ "Ровные" и "зубчатые" шайбы являются аксессуарами, которые используются с анкерами.

CVTAJ – 09 & CVTAJ – 10

A X B	T	D
25	2,0-2,5-3,0	8-10-12
25	2,0-2,5-3,0	8-10-12
25	2,0-2,5-3,0	8-10-12
30	2,0-2,5-3,0	8-10-12
30	2,0-2,5-3,0	8-10-12
30	2,0-2,5-3,0	8-10-12
40	3,0-4,0	8-10-12
40	3,0-4,0	8-10-12
40	3,0-4,0	8-10-12
50	3,0-4,0-5,0	8-10-12
50	3,0-4,0-5,0	8-10-12
50	3,0-4,0-5,0	8-10-12

* Tüm ölçüler "milimetre" olarak verilmiştir. Ondalık basamaklar "virgül" ile gösterilmektedir.

* All values are in "millimeters". A "comma" is used as the decimal marker.

* Все размеры даны в миллиметрах. Десятичные дроби отмечены запятой.