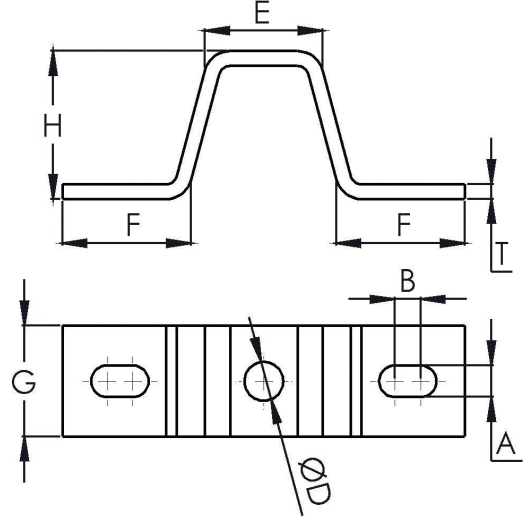
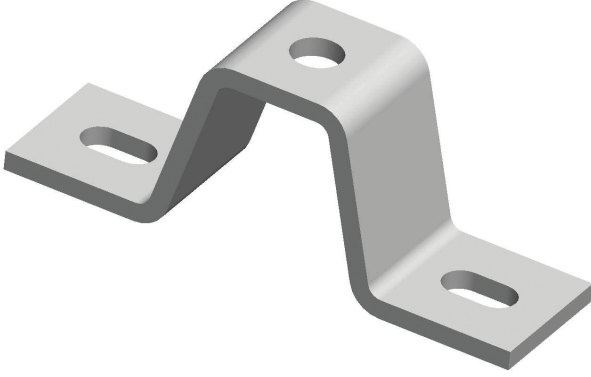


Soffit Ankraj

Soffit Anchorage
Soffit Анкера



- ◆ Dış cephe giydirmede, mermer ve granit montajlarında prati
- ◆ Taşın Beton altına sabitlenmesinde kullanılmaktadır.
- ◆ **430 - 304 - 316 Kalite Paslanmaz (INOX)** malzemeden üretilmektedir.
- ◆ İsteğe göre Delik Ölçüsü M12 – M14 veya M16 olarak da üretilmektedir.

- ◆ Especially preferred in exterior mounting of the buildings, marble and granite assemblies etc.
- ◆ Provides easy and safe assembly.
- ◆ Used in fixing the natural stone beneath the concrete floor.
- ◆ Produced from **430 - 304 - 316 Quality Stainless Steel (INOX)**.
- ◆ Upon request, Hole Size can be produced as M12 – M14 or M16.

- ◆ Обеспечивает практический и надежный монтаж мраморных и гранитных фасадных панелей.
- ◆ Производится и нержавеющей стали марки **430 - 304 и 316**.
- ◆ В случае необходимости, могут изготавливаться и размеры (Размер Отверстия) M12 – M14 or M16.

CVTAJ-15

Yükseklik	Delik Ölçüsü	Genişlik	Kalınlık	Slot Ölçüsü		
Height	Hole Size	Width	Thickness	Slot Size		
Высота	Размер отверстия	Ширина	Толщина	Размер отверстия		
H	D	G	T	A X B	E	F
20	M10	27 – 30	2,5 – 3,0 – 4,0	20 X 10,5	36	40
30	M10	27 – 30	2,5 – 3,0 – 4,0	20 X 10,5	36	40
40	M10	27 – 30	3,0 – 4,0 – 5,0	20 X 10,5	36	40
60	M10	27 – 30	3,0 – 4,0 – 5,0	20 X 10,5	36	40
80	M10	27 – 30	3,0 – 4,0 – 5,0	20 X 10,5	36	40
100	M10	27 – 30	3,0 – 4,0 – 5,0	20 X 10,5	36	40
120	M10	27 – 30	3,0 – 4,0 – 5,0	20 X 10,5	36	40