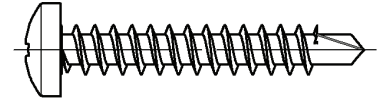
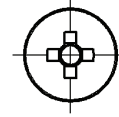
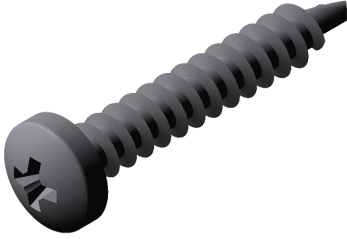


## Matkap Uçlu Vidalar

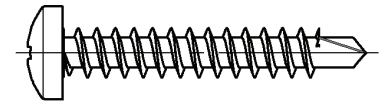
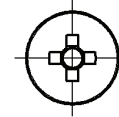
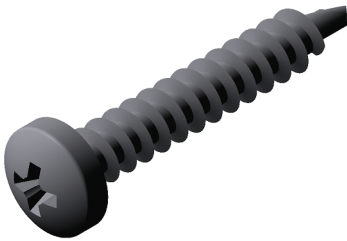
Self Drilling Screws  
Шурупы под дрель



Anma Çapı Thread Size Номинальный диаметр	Ø d	3.5	3.9	4.2	4.8	5.5	6.3
Delme Kapasitesi Drill Range Мощность сверления		0,70 – 2,25	0,70 – 2,40	1,75 – 3,00	1,75 – 4,40	1,75 – 5,25	2,00 – 6,00
Tel Çapı Wire Diameter Диаметр проволоки	Ø d <sub>p</sub>	2,80	3,10	3,60	4,10	4,80	5,80
Yüzey Sertliği Surface Hardness Твердость поверхности		min. 450 HV					

## Yıldız Silindir Başlı (YSB) Matkap Uçlu Vidalar

Cheese Head Self Drilling Screws  
Шурупы под дрель с цилиндрической крестообразной головкой



CVTV-06

Ebat - Size - Размеры		
3.9 X 13	4.2 X 13	4.8 X 16
3.9 X 16	4.2 X 16	4.8 X 19
3.9 X 19	4.2 X 19	4.8 X 22
3.9 X 22	4.2 X 22	4.8 X 25
3.9 X 25	4.2 X 25	4.8 X 32
3.9 X 32	4.2 X 32	4.8 X 38
-	4.2 X 38	4.8 X 50
-	4.2 X 45	4.8 X 60
-	-	4.8 X 70
-	-	4.8 X 80

\* Tüm ölçüler "milimetre" olarak verilmiştir. Ondalık basamaklar "virgöl" ile gösterilmektedir.

\* All values are in "milimeters". A "comma" is used as the decimal marker.

\* Все размеры даны в миллиметрах. Десятичные дроби отмечены запятой.